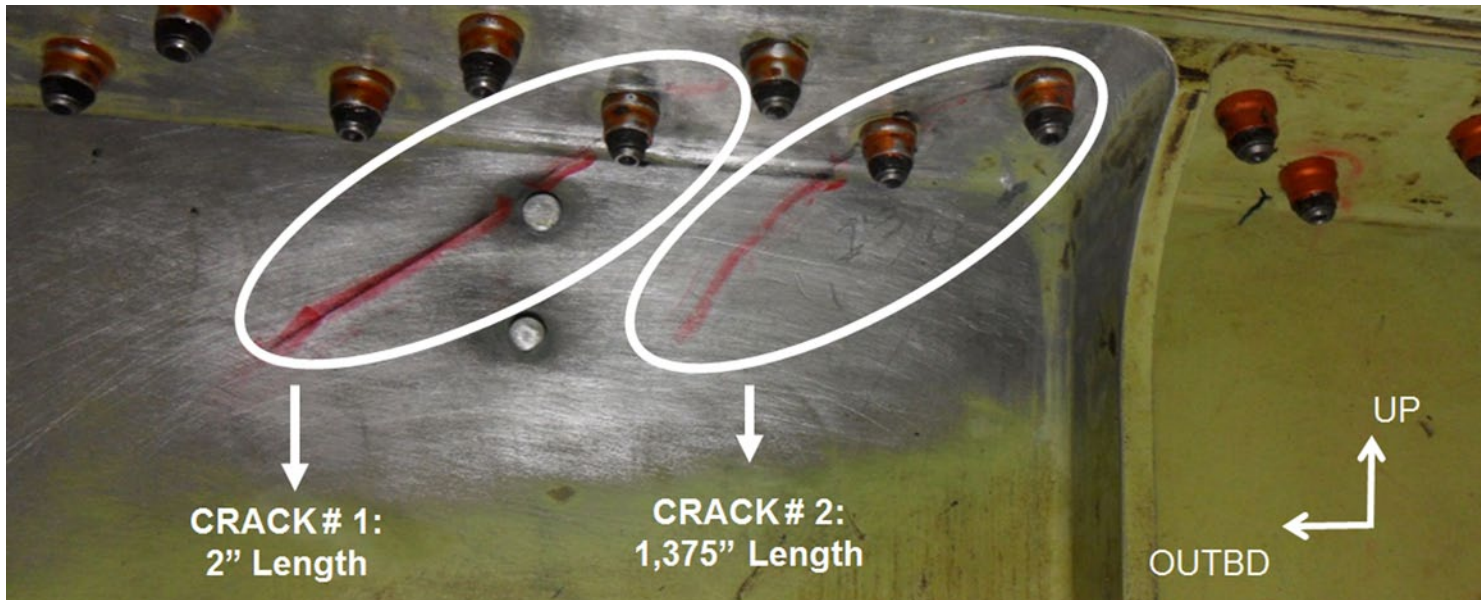


EASA PART 21 J & G repair solutions

from BAE Systems Regional Aircraft



Case study 3 – Jetstream 41 wing spar repair

Project Scope

Delivery of repair design and installation instructions following identification of cracking in the wing rear spar upper flange and web.

The Project

- Assess structural implications arising from MRO supplied damage report.
- Develop wing spar repair concept.
- Define repair components and create detail drawings based on operator supplied damage reports and existing baseline production drawing set.
- Determine repair installation instructions.
- Liaise with MRO to support embodiment of repair and answer queries on a 24/7 basis.

Deliverables

- 2D drawings for manufacture of repair items and installation.
- Repair installation instruction document.
- CVE assessment and approval of repair drawings/documentation.
- Support to MRO during embodiment of repair to address queries.
- Successful integration of repair and aircraft return to service.

Contact:

George Wardrope, Engineering Manager
Tel: +44 (0)1292 67 5049
Email: george.wardrope@baesystems.com



Copyright © 2016 BAE SYSTEMS. All rights reserved.

The information contained within this brochure is of the nature of general comment only and does not constitute a warranty or condition of any contract. BAE Systems accepts no liability for the misuse or misinterpretation of such information.

BAE SYSTEMS is a registered trade mark of BAE Systems plc. pwk_0708C

BAE SYSTEMS

INSPIRED WORK