



FLIGHT OPERATIONS SUPPORT

REGIONAL AIRCRAFT

BAE SYSTEMS
INSPIRED WORK

Cover and this image: Cobham BAe 146 on approach to the unpaved runway at Kambalda mine, 200 miles east of Perth, Australia. (Courtesy of Cobham Aviation Services)



BAE Systems Regional Aircraft FLIGHT OPERATIONS SUPPORT

The Flight Operations Support (FOS) service is based at BAE Systems Regional Aircraft's Prestwick site. We are responsible for Flight Operations Integrity, Airline Flight Operations Support, Operational Performance Support, Flight Test Engineer activities, Operational Performance Software and Performance Training.

Meet the team...

Stephen Morrison
Project Engineer -
Head of Flight
Operations Support



Gordon Jackson
Principal Engineer -
Lead Flight Test
Engineer



Mark McArdle
Senior Engineer - Flight
Operations Support



Mark Reid
Engineer - Flight
Operations Support



Daniel McNish
Engineer - Flight
Operations Support



Colin Wilcock
Flight Safety and Integrity Pilot
Colin has recently celebrated
his 50th anniversary of flying.
During his career he has flown a
multitude of aircraft starting with
the RAF on fast jets and then
moving on to fly all the Regional
Aircraft types including spells
as a Jetstream test pilot and
ATP, 146/RJ Line Captain.



Our pedigree...

Regional Aircraft has a proud UK aviation heritage which stretches back almost a century. Based at Prestwick in southwest Scotland, where there has been an aerospace presence for over 70 years, Regional Aircraft today is a total integrated aircraft support provider.



BAE Systems



Hawker Siddeley



British Aerospace



De Havilland



Scottish Aviation



Avro

Our activities...

The main activities carried out by Flight Operations Support are:

Flight Operations Support:

Offer advice and solutions to Customers' operational requirements. Run an annual well supported Flight Operations Support conference.

Flight Operations Integrity:

Continually monitor and review flight operations integrity issues, ensuring increased operational safety.

Flight Test Engineer activities:

Provide FTEs for flight testing of Regional Aircraft types. Provide stall panels for hire.

Operational Performance Support:

Provide advice and solutions to Customers' performance issues.

Performance Software Services:

Offer operational performance software or outputs as required (e.g. Airport Analysis RTOW & RLW charts), and provide continued support and advice.

Performance Training:

Provide Performance and Dispatch Courses.

Publications:



100 Ways to Reduce Fuel Burn brochure

A guide for all BAE Systems Regional Aircraft operators



Remote Runway Operations brochure

A guide for operators of the BAe 146 and Avro RJ



Think Ice brochure

Icing awareness for all BAE Systems Regional Aircraft operators



JETSETS

Flight Safety newsletters: **JEt** and **Turbprop Support**, **Engineering**, **Training** and **Safety**



Airline delegates attending one of our annual Flight Operations Support conferences.

Our customer services...

- Provide a point of contact for operational queries
- Provide simplified practical data to the Customers' requirements
- Offer airfield analysis - RTOW and RLW charts
- Offer route analysis for marketing purposes - fuel planning, sector time, fuel and payload estimates
- Provide weight and balance systems and procedures
- Support aircraft introduction into service
- Offer performance software
- Offer BAe 146/Avro RJ fuel management tools with the Intelligent Fuel Calculator and Wind Effects Tables.



Our customer training...

In addition to the customer services, Flight Operations Support offer pilot/engineer/dispatcher training in performance and weight and balance. The Aircraft Performance Course covers the following areas:

- Review of the Flight Manual and Flight Crew Operations Manual FCOM
- Factors Governing Take-off Weight and Speed
- Take-off Climb and Obstacle Clearance
- Reduced Take-off Thrust
- En-route Performance
- Landing Performance
- Worked examples from the Flight Manual performance charts
- Fuel Planning examples from the FCOM.



DEDICATED TO SUPPORT YOUR OPERATIONS

Our software...

Flight Operations Support and our collaboration partners Navtech can provide Operational Performance software for Regional Aircraft types, allowing Customers to produce regulated take-off and landing weight charts. Marketing software CAPECS is also available for estimating sector time, fuel burn and payload.

Alternatively, the analysis can be carried out using this software by the Flight Operations Support Department and the RTOW and RLW charts provided to customers as required.

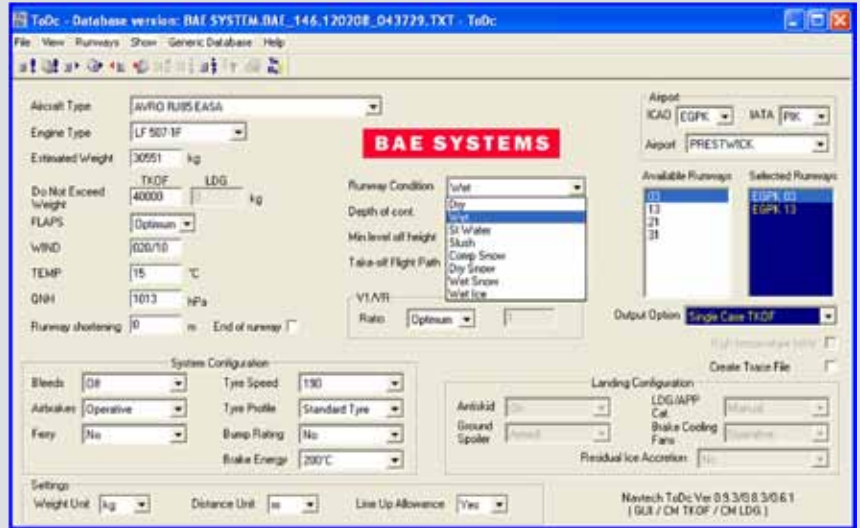


Navtech is a leading global provider of flight operations solutions, serving more than 350 airlines and aviation services customers.

Navtech's product suite includes navigational data solutions, flight planning, aeronautical charts, aircraft performance software (take-off/landing, weight and balance), and crew planning solutions.

For the BAE Systems turboprops and BaE 146/Avro RJ we offer the Take-off Data calculation (ToDc) software based on reading the BAE Systems Manufacturers Module representing the AFM Flight Manual charts. Ferry datasets and High Altitude Airport datasets are also available.

See www.navtech.aero for more details or contact: navtechsales@navtech.aero

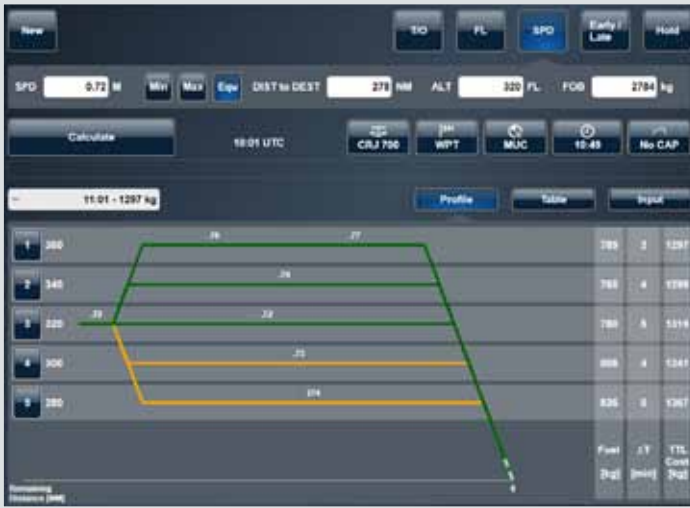


The MM and ToDc cover the following:

Dry and wet runway
Flaps up ferry

Contaminated runway
Gear down ferry

Three engine ferry
High altitude datasets



Pacelab CI OPS is the comprehensive cost index operations solution for regional aircraft.

The software supplies the variable speed schedules required for CI-optimized flight planning and supports tactical economic decisions on board by enabling flight crews to recalculate the most cost-efficient trajectory for a given set of flight conditions. Available for the Avro RJ series of aircraft.



See www.pace.de for more details or contact: oliver.spauth@pace.de



BAE Systems Regional Aircraft
Prestwick International Airport
Ayrshire
KA9 2RW
United Kingdom
Telephone +44 (0)1292 675225
Fax +44 (0)1292 675432
E-mail: raftops@baesystems.com
Web: www.regional-services.com



© 2014 BAE SYSTEMS. All rights reserved.

All rights reserved. Whilst every care has been taken to ensure the accuracy of the information contained in this document at the time of publication no warranty is given in respect thereof and the authors specifically exclude their liability for any use made of the document to the fullest extent under any applicable law. This publication is intended only as an informative guide. For definitive guidance, reference must be made to Manuals as appropriate.

BAE SYSTEMS is a registered trade mark of BAE Systems plc.

pwk_0660 May 2014
Produced by the Graphics and Media Team. BAE Systems Regional Aircraft,
Prestwick. Tel: 01292 675840 Email: ragraphics@baesystems.com